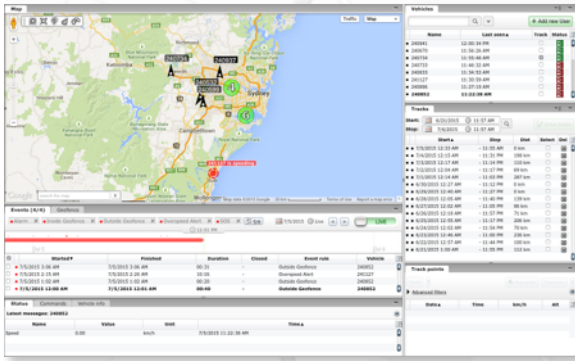


BLUE ELECTRONICS



Graphical User Interface (GUI)

Applications:

- Vehicle Tracking
- Mobile Plant & Equipment Tracking
- Lighting Plant Tracking & Fuel Monitor
- Mobile Generator Tracking & Fuel Monitor
- Mobile Diesel Pump Tracking & Fuel Monitor
- Personel Tracking

BlueTrack - Web-based Tracking Service

Product Description

The **BlueTrack** web-based tracking service can be used to monitor & log the location of vehicles, plant, equipment and personnel. It comprises of a small 3G Modem, which is installed inside the vehicles, plant or equipment to be monitored. The 3G Modem communicates with the Web-server via the mobile network and uploads its positional information. If the network is un-available the 3G Modem stores the positional information until a new connection is established and then uploads its data thus ensuring no information is lost.

Vehicle, plant, equipment and personnel can be grouped so they can be easily managed and viewed. Each device or person can be assigned with its own unique name and description i.e. LV1234 (Workshop Ute).

The site stores all the positional data so it can be used to generate reports, display trips etc. The reports can be viewed online or scheduled to be emailed direct to your inbox. There is an extensive range of reports that can be configured based on date, time, vehicle status, location and driver behaviour etc.

Alarms can be set for events such as In/Out of Geofence, Speeding, Low Battery, Low Fuel, SOS etc. and these can be sent out as an SMS or emailed as they occur.

Main Features:

- Web-based Graphical User Interface (GUI)
- Near Real-time Tracking
- User-configurable Alarms
- Historical Logging
- Data Export to Excel or Kmz file
- Extensive Reporting Capability
- Event Triggered Emails and/or SMS Alerts
- Plant Status Monitoring
- Configurable User login profiles

Technology Specification:

- 3G Modem (Telstra Approved)
- 50-channel GPS Module
- Position Accuracy: 2.5m
- Velocity Accuracy: 0.05m/Sec
- Heading Accuracy: 0.1deg
- Cold Start 27sec
- Hot Start 1sec
- I/O: 2 Standard & Expandable
- System Voltage: 10-30VDC



3G Mini Tracker (3GM-02)



Blue Electronics Pty Ltd

Po Box 937

Southport Qld 4215

P: +61 7 3245 4445

F: +61 7 3245 3462

E: sales@blueelectronics.com.au

W: www.blueelectronics.com.au