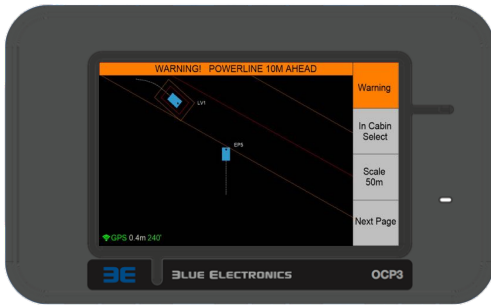


Powerline Collision Awareness System (PCAS)



Operators Control Panel

Main Features:

- Vehicle to Powerline Warning
- Worker to Powerline Warning
- Buddy Alert Warning
- Event Logging
- Optional Remote Monitoring
- Optional High Precision GPS
- Easy & Quick to Install

Product Description

The **Powerline Collision Awareness System (PCAS)** is a low cost solution for any Contractor and/or Power Utility Company working in close proximity to Overhead Powerlines. The PCASystem provides Visual and Audible Warnings to Operators of Elevated Work Platforms, Vehicles or Workers if they get too close to Powerlines.

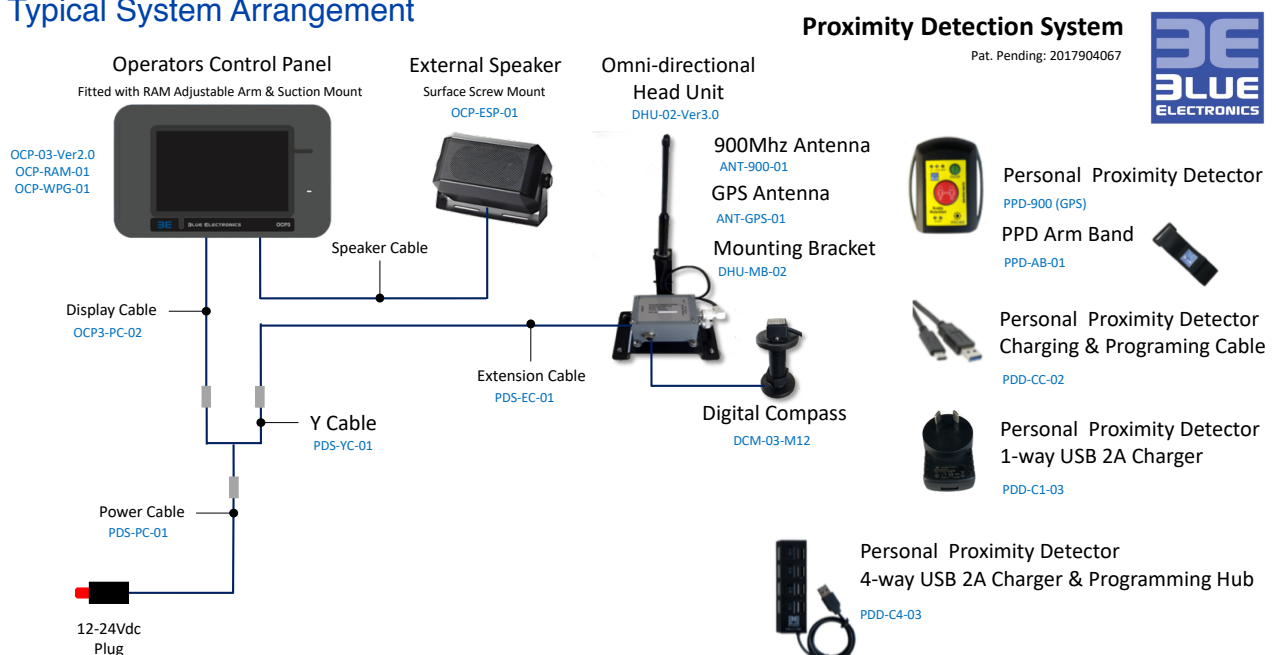
The PCASystem uses GPS and Geofencing to designate a **No Go Zone (NGZ)** around Powerlines thus providing a virtual barrier for Operators and Workers. The **No Go Zone** is fully user configurable along with the Warnings & Alerts. It's also possible to trigger an external siren mounted on top of the machine to raise the alarm to workers on the ground so immediate action can be take to avoid a potential lethal accident.

The Operators Control Panel, which is mounted in the operators cabin displays surrounding machines, workers and the location of the powerlines. When a potential collision is detected a Warning is displayed on the screen and an Audible Alarm raised.

Workers wearing the Personal Proximity Detector (PPD) can also be alerted when getting too close to Powerlines and can also use the **'Buddy Alert'** feature to raise a global worksite alarm that can be used to STOP all work and movements immediately if a dangerous situation is observed. The **'Buddy Alert'** alarm can only be reset by the person initiating it.

The standard system is accurate to +/-2.5m with a High Accuracy option available where sub-meter accuracy is required. The PCASystem can also be Remotely Monitored with machine and worker locations and alarms being displayed on a Web browser.

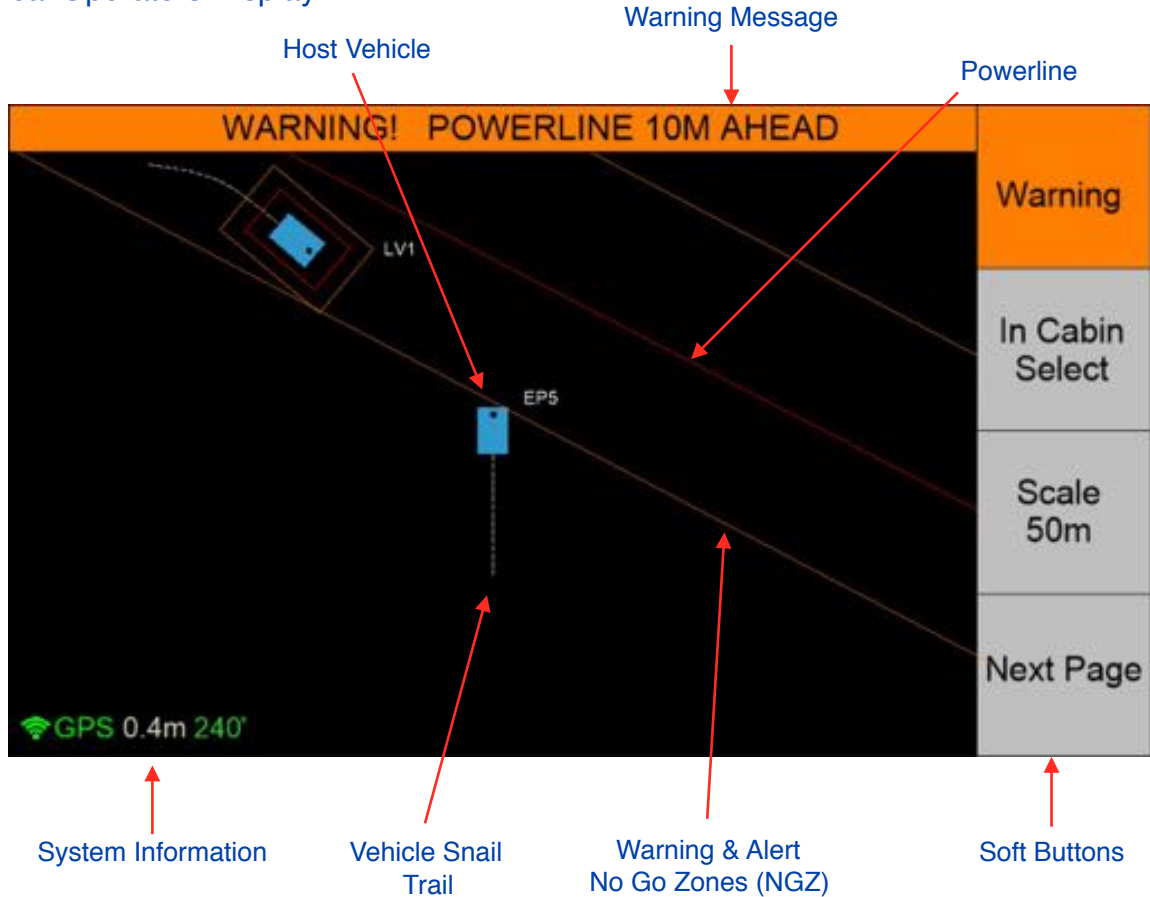
Typical System Arrangement



* Additional hardware required if High Precision GPS is required.

Doc: PDS+CPD BlockDiagram_REVA

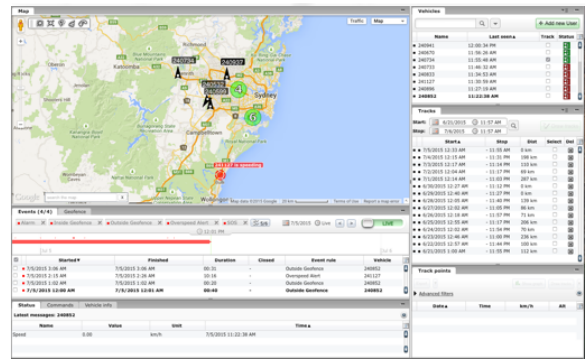
Typical Operators Display



Main Features:

- 5" Colour Touch Screen Display
- Adjustable brightness & volume
- Heavy duty adjustable RAM mounting bracket system
- Configurable Warning & Alert Zones
- Customisable Alerts (.wav)
- Visual GUI & Audible Warnings
- Event & Alarm Logging
- GPS/GLONASS/SBAS Satellite Positioning
- 900Mhz RF Communications
- Operates on 12~24Vdc
- Typical Range (2km Typical NLS)
- Accuracy (+/- 2.5m Absolute, +/-1m Relative)*
- Minimal Installation requirements
- High Precision GPS with better than 40mm Absolute Accuracy (Optional)
- Personnel Proximity Protection (Optional)
- Remote Monitoring (Optional)

* GPS Accuracy based on clear view of the sky and no obstructions



WebPortal



Modem

Local Australian Owned Company



Blue Electronics Pty Ltd
Po Box 4678
Toowoomba East Qld 4350
P: +61 7 3245 4445