

BLUE ELECTRONICS



Operators Control Panel (OCP)

Main Features:

- 360deg View of Vehicles & Personnel
- Overspeed Alert
- POI & Geofencing
- Custom Audible Warnings & Messages
- Event Logging
- Remote Access & Tracking

Vehicle Collision Avoidance System (VCAS)

Product Description

The **VCAS** is designed for installation and use on small to heavy vehicles such as Light Vehicles, Tyre Handlers, Dozers, Excavators, Scrapers, Water Carts, Haul Trucks, Draglines and shovels etc. It provides the Operators of the vehicles with a 360deg view of his/her surroundings displaying all vehicles and workers fitted with or wearing the system.

The system uses a range of technologies to detect and warn the operator of a potential collision with another vehicle or detection of a worker. Works wearing a Personal Proximity Device (PPD) are also warned if they get too close to a vehicle fitted with the system.

The system is configurable to meet the customers specific road rules and logs all events and alarms to memory which can be downloaded locally to a USB memory stick or remotely via a modem.

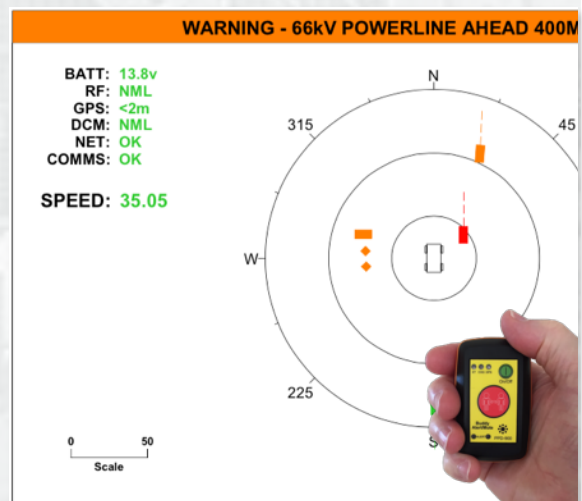
The system can also be configured to change its parameters based on location and can warn the operator of specific hazards such as Overhead Powerlines using Points of Interests (POI's)

Main Features:

- Purpose built Machine PC with 4" colour display and adjustable brightness & volume (7" also available)
- Rugged enclosure, fan-less design
- Heavy duty adjustable RAM mounting bracket system
- Provides Adjustable Warning & Alert Safety Zones
- Displays Speed & System Information
- 360deg detection of Vehicles & Personal
- Event & Alarm Logging
- Uses Multiple Technologies
- Minimal Installation requirements
- Optional Live Tracking & Personal Protection

Technology Specification:

- Position Sensor: GPS/GLONASS/QZSS/SBAS (72 Ch)
- Horizontal Accuracy: 2.0m or better
- Velocity Accuracy: 0.05m/Sec
- Heading Accuracy: 0.1deg
- Radio: 900Mz Spread Spectrum
- Typical Operating/Detection Range: 2km (NLOS) >5km (LOS)
- System Voltage: 12-24VDC
- IP Ratings: OCP-IP4x, OHU-IP65, PPD-IP65



Personal Proximity Device (PPD)



Blue Electronics Pty Ltd

Po Box 937

Southport Qld 4215

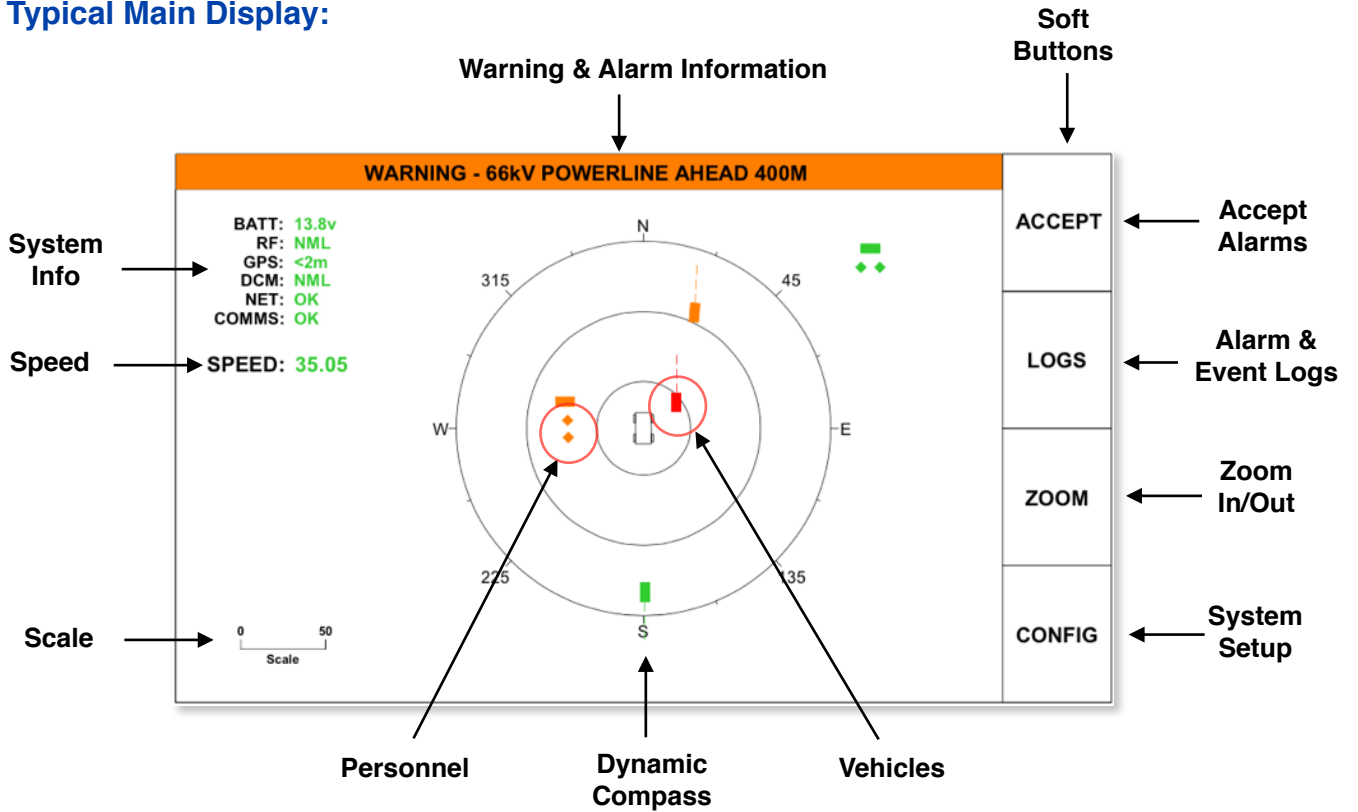
P: +61 7 3245 4445

F: +61 7 3245 3462

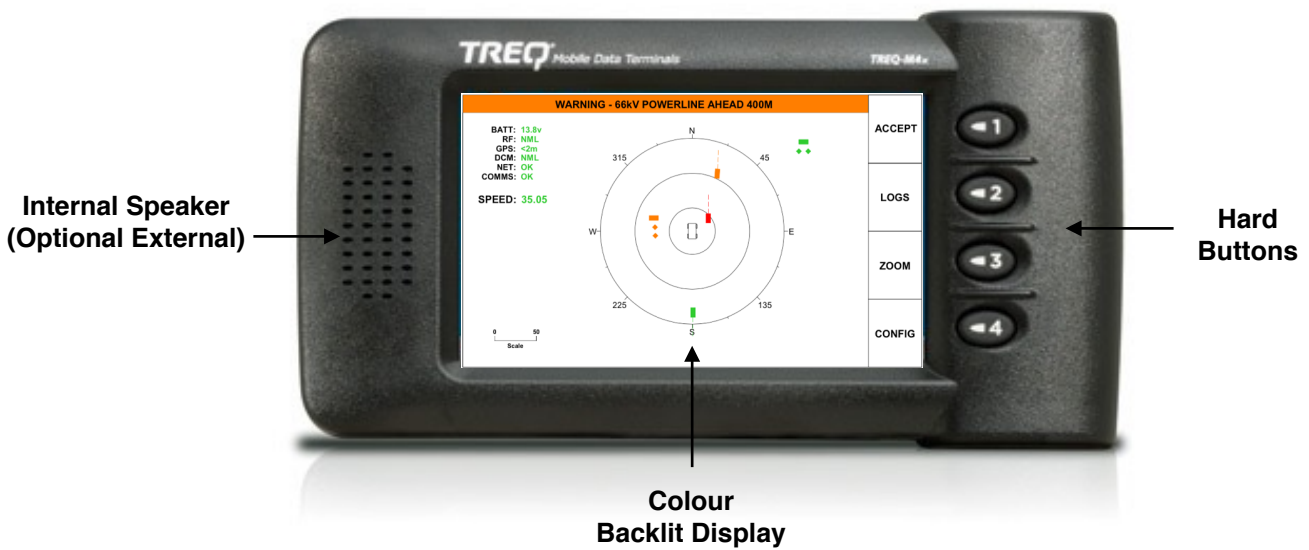
E: sales@blueelectronics.com.au

W: www.blueelectronics.com.au

Typical Main Display:



Operators Control Panel:



Ordering Information:

- Operators Control Panel: OCP900
- Omni Direction Antenna: OHU900
- Power Cable: PDS900-PC-01
- Y Cable: PDS900-YC-01
- Extension Cable: PDS900-EC-01
- Personal Proximity Device: PPD900 (Optional)
- Camera Safety System: CSS900 (Optional)