

# BLUE ELECTRONICS

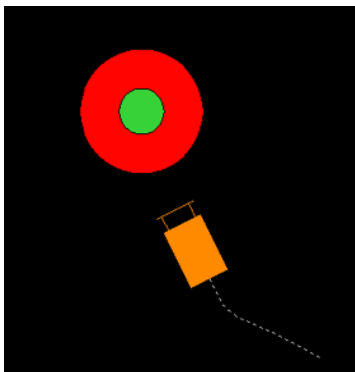


Operators Control Panel

## Main Features:

- Dozer to Coal Valve Warning
- Dozer to Stacker/Reclaimer Warning
- Dozer to Dozer Warning
- Stacker/Reclaimer Collision Shut-down
- Personal Proximity Detection
- Machine Status Indication
- Dozer Inclination Warning
- Event Logging
- Remote Monitoring Available

## Stockpile - Early Warning Detection System



### Product Description

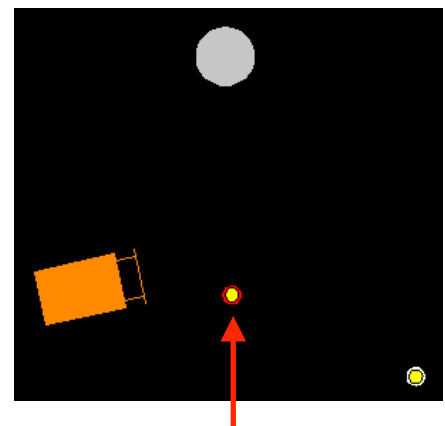
The **Stockpile EWDS** provides Dozer operators working on stockpiles with the ability to see the location and status of other dozers, stackers, reclaimers and coal valves. It also provides visual and audible warnings of potential collisions.

Each piece of mobile equipment (dozer, stacker, reclaimer etc.) is fitted with a transceiver which broadcasts its location to other nearby equipment.

Protection zones are configured around each piece of equipment and if these are breached an alert is issued to the operator.

The Stockpile Machine (Stacker/Reclaimer) hardware has an output that can be used to stop the equipment if a collision is detected. It is also equipped with RS485 serial communications that can be used to send and receive data about the EWDS and Stockpile equipment i.e. Run/Stopped Status, Location, Collision Alert etc..

With the addition of a Personal Proximity Device (PPD) personal proximity detection can be provided to surveyors and/or maintenance staff that enter the stockpile area whilst the machines are in operation. If the person gets too close to the equipment the operator of that equipment will get an alarm. The location of the person wearing the PPD will also be seen on the screen.



Personnel Protection

### Main Features:

- Purpose built Machine PC with 6.5" colour touch screen display
- Adjustable brightness & volume
- Heavy duty adjustable RAM mounting bracket system
- Provides Adjustable Warning Safety Zones
- Dynamic Coal Valve Warning Zones
- Stacker/Reclaimer/Dozer Warning Zones
- Object GeoFence Warnings (Optional)
- Personnel Proximity Protection (Optional)
- RS485 Communications
- Event & Alarm Logging
- GPS/GLONASS Satellite Positioning
- 900Mhz RF Communications
- Operating Range (2000m Typical NLS)
- \*Accuracy (+/- 2m Typical)
- Minimal Installation requirements

\* GPS Accuracy based on clear view of the sky and no obstructions



**Blue Electronics Pty Ltd**

Po Box 937

Southport Qld 4215

**P:** +61 7 3245 4445

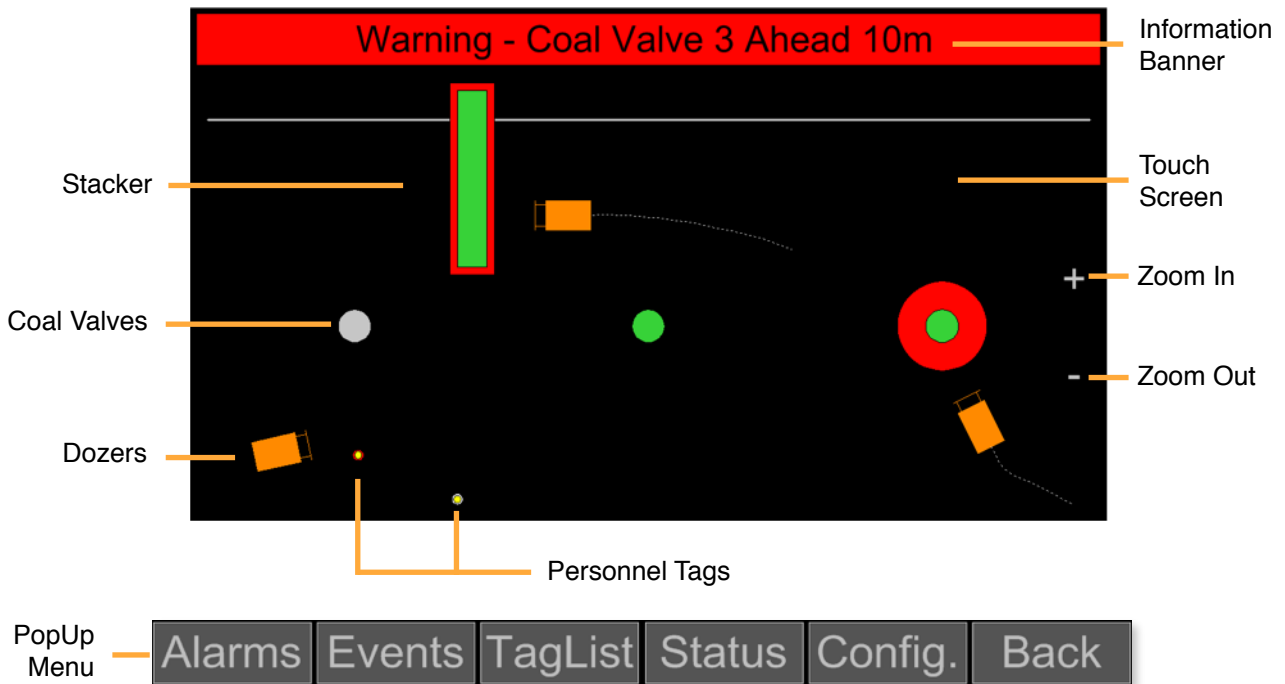
**F:** +61 7 3245 3462

**E:** [sales@blueelectronics.com.au](mailto:sales@blueelectronics.com.au)

**W:** [www.blueelectronics.com.au](http://www.blueelectronics.com.au)

# BLUE ELECTRONICS

## Operators Control Panel (OCP)



## Personal Proximity Device (PPD)

The PPD is worn by any person needing to work on or inclose proximity to the stockpile and/or the stockpile machines i.e. Surveyors or Maintenance Fitters etc.

